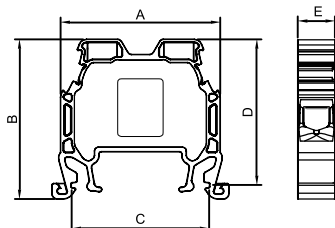


**MRK SERIES SCREW CONNECTION RAIL TERMINAL BLOCKS**

**MRK 10**  
Order No: 1042


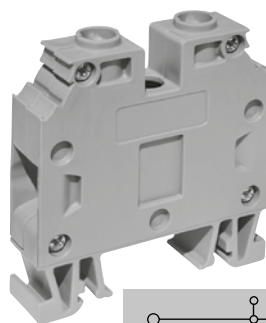
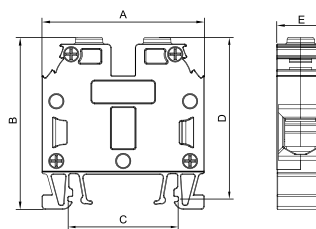
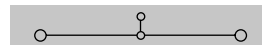
Dimensions (mm)	A	B	C	D	E
	40	40	34,5	36,5	9,5

MATERIAL	
Body	PA6.6
Bridge	Copper
Contact	CK45 Steel
Screw	Steel
Temp.	-40 °C, +140 °C
Cable Strip L.	12 mm
Torque	0,8 Nm

DATA	TSE / CE	UL
Voltage	750 V	600 V
Current	57 A	57 A
Section	10 mm <sup>2</sup>	8 AWG
Norm	EN-60947-7-1	UL 1059

COLOURS			
	V2	V0	
COLOUR	Order No.	Order No.	Pcs.
GREY	1042	0792	100
CREAM	1043	0793	100
BLACK	1044	0794	100
BLUE	1045	0795	100
BROWN	1046	0796	100
RED	1047	0797	100
YELLOW	1048	0798	100
GREEN	1049	0799	100

ACCESSORIES			
Cross Connection	Order No.	Section	Pcs.
	1940	10 / 2	100
	1941	10 / 3	50
	1942	10 / 4	50
	1943	10 / 10	15
	1944	10 / 20	10
Stopper	1202,1222,1212		
Group Sticker	1232		
Marking	9770 / 2630 / 4442 / 9540 / 7301		


**MRK 16**  
Order No: 1132


Dimensions (mm)	A	B	C	D	E
	51	54	34,5	51	12

MATERIAL	
Body	PA6.6
Bridge	Copper
Contact	CK45 Steel
Screw	Steel
Temp.	-40 °C, +140 °C
Cable Strip L.	18 mm
Torque	2,0 Nm

DATA	TSE / CE	UL
Voltage	750 V	600 V
Current	76 A	63 A
Section	16 mm <sup>2</sup>	6 AWG
Norm	EN-60947-7-1	UL 1059

COLOURS			
	V2	V0	
COLOUR	Order No.	Order No.	Pcs.
GREY	1132	0882	50
CREAM	1133	0883	50
BLACK	1134	0884	50
BLUE	1135	0885	50
BROWN	1136	0886	50
RED	1137	0887	50
YELLOW	1138	0888	50
GREEN	1139	0889	50

ACCESSORIES			
Cross Connection	Order No.	Section	Pcs.
	2257	16 / 2	50
	2258	16 / 3	40
	2259	16 / 4	40
	2260	16 / 5	25
	2265	16 / 10	10
	Stopper	1202,1222,1212	
Group Sticker	1232		
Marking	9770 / 2630 / 4442 / 9540 / 7301		