

*Dual Rugged Joystick
with "5" steps*

*The Perfect Partner for Material Handling
and Processing Machinery*



F24-60⁺ INDUSTRIAL

**JOYSTICK REMOTE
CONTROLLER**

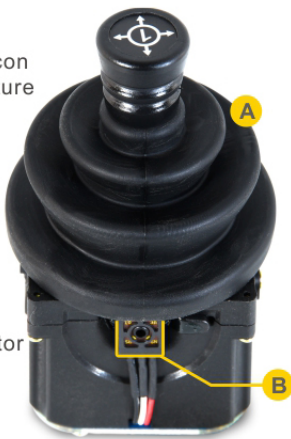
- Start Button
- High Gain Internal Antenna
- Rotary Key
- Multi-function Indicator
- Protection Rim
- 5 Steps Dual Axis Joystick
- Programmable Function Pushbutton
- EMS Button
- 3 Positions Toggle Switch (Waterproof)
- 2 Positions Toggle Switch (Waterproof)



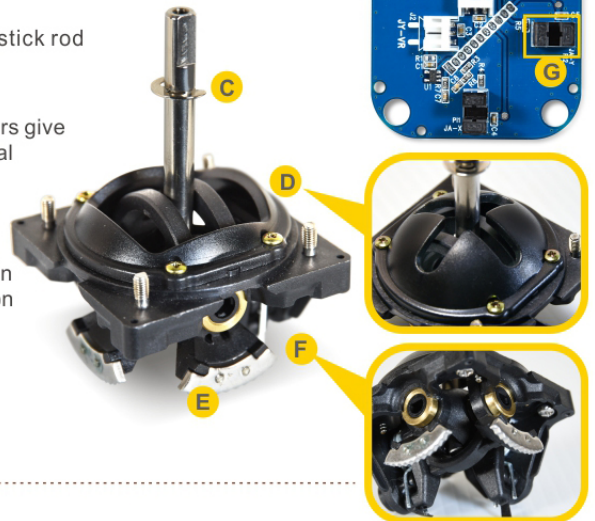
Robust & Durable | Precision Control | ECO Design | High Performance

5 Steps Dual Axis Joystick (Patent)

- A) Long life silicon rubber structure (Patent)
- B) Sealed construction Angle Detector (Dust-free)

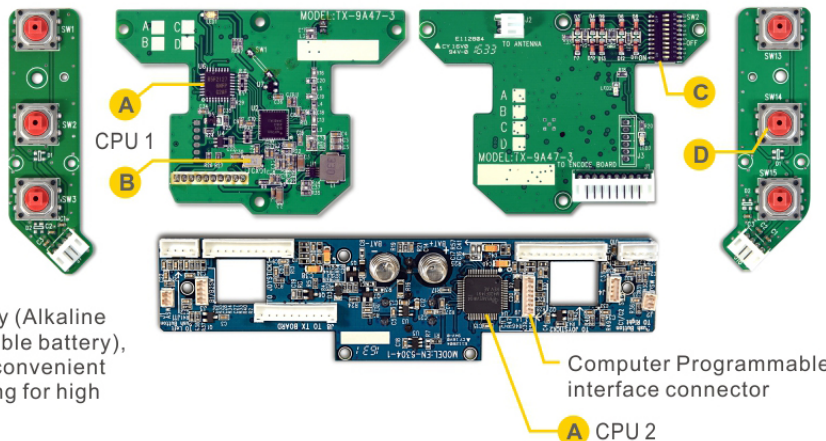


- C) Solid stainless steel joystick rod
- D) Cross Plate (option)
- E) 2 mm Stainless Steel gears give excellent clear mechanical feeling during operating
- F) Patented swing mechanism extends Angle Detector life cycle in severe operation condition
- G) Optical sensor (neutral position) making operation safer



Modular Design for Easy Maintenance

- A) Both transmitter and receiver are equipped with dual CPU. It provides better performance in encoding/decoding as well as controlling radio communication
- B) TCXO (Temperature Compensate Crystal Oscillator) provides higher levels of radio accuracy against severe temperature changes
- C) Dip switch for changing channel and emission power on site without computer
- D) Waterproof/Dustproof pushbutton



- E) Using AA size battery (Alkaline battery or rechargeable battery), it's available in any convenient store. No more paying for high cost battery pack

Computer Programmable interface connector

A CPU 2

F24-60⁺ Receiver



- A) Receiver Handle Bar
- B) Removable Antenna
- C) RF module with Anti-interference metallic housing
- D) Computer Programmable interface connector
- E) CPU 1
- F) NC/NO relay available (Option)
- G) Jumper for customized COM line configuration

- H) AC and DC power supply are available
- I) Cable Gland
- J) Dip Switch for changing channel without computer
- K) SQ Indicator
- L) TCXO (Temperature Compensate Crystal Oscillator) provides higher levels of radio accuracy against severe temperature changes
- M) CPU 2

- N) A sophisticated Surface Acoustic Wave (SAW) filter blocks unwanted radio signal to ensure smooth radio link
- O) Receiver Shock Absorber



F24-60⁺ Features

Security Enhanced & Anti-Spy

- Transmitter with its powerful processor, it generates SRC (Security Random Code) radio signal with random coding to prevent spy copying
- By integrating hamming coding and CRC (Cyclic Redundancy Check) technology, it provides accuracy in radio data transmission
- A unique Non-Repeated security code (ID code), it prevents the error output and improves the operating safety



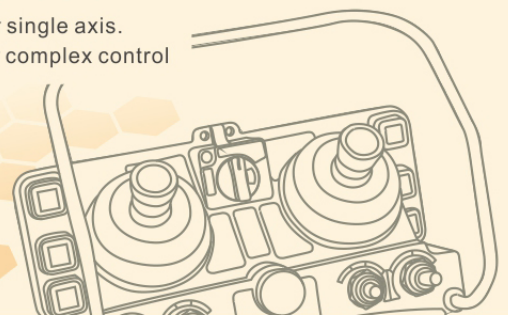
Take and Release

This feature allows two or more operators the ability to control one crane system from opposite ends of a long runway or cross travel



Relay Configuration



Control up to 16 relays for single axis. It gives great flexibility for complex control





F24-60⁺ INDUSTRIAL JOYSTICK REMOTE CONTROLLER

www.telecrane.com.tw

 <p>Transmitter</p>	5 Steps Joystick	x 2	 <p>Receiver</p>	Maximum 40 relays output (Software setting)				
	1 Step Pushbutton	x 6		NC / NO Relay (Option)				
	EMS Button	x 1		Passive Antenna (Option)				
	Rotary Key	x 1						
	2 Positions Toggle Switch	x 2						
	3 Positions Toggle Switch	x 2						
General Specifications								
Operating Temperature		-35°C ~ +80°C		Frequency	433.05 ~ 434.79 MHz			
Operating Range		Up to 100 Meters		ID Code	4.3 Billion Sets Non-Repeated (32 Bit)			
Power	Transmitter	4 pcs AA size batteries Alkaline/rechargeable acceptable		Hamming Distance	> 20			
	Receiver	AC 24 / 48 / 110 / 220 / 380V & DC 12 ~ 24V (selectable)		Dimensions / Weight	<table border="1"> <tr> <td>Transmitter</td> <td>220 x 110 x 90 mm / 860g (excluding batteries)</td> </tr> <tr> <td>Receiver</td> <td>290 x 230 x 70 mm / 2200g (excluding cable)</td> </tr> </table>	Transmitter	220 x 110 x 90 mm / 860g (excluding batteries)	Receiver
Transmitter	220 x 110 x 90 mm / 860g (excluding batteries)							
Receiver	290 x 230 x 70 mm / 2200g (excluding cable)							

Software



Main page

- ID code, Manufactured date
- Relay in usage display
- Select relays for joysticks

Function Setting

- Remote control function setting
- Pushbutton function setting
- Toggle Switch function setting

Joystick Setting

- Joystick function setting
- Joystick-Relay control display
- Joystick-Axis control setting

Accessories



CD-ROM & USB Interface Cable



Copier



External Passive Antenna Set